

## INTRODUCTION

Molex's new 0.62mm (.024") height FPC connector offers one of the lowest profiles available in the market today to meet continuing down-sizing trends for mobile applications.

This new 0.30mm (.012") pitch FPC connector was designed for ultra-thin cell-phones. The 0.62mm (.024") height represents the lowest-profile connector offered by Molex, and stretches the boundaries on how low and thin connector designs can go.

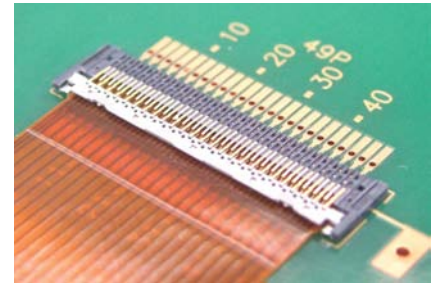
This connector is available in a bottom-contact design, which is the most common in the industry. It includes Molex's proven Easy-On™ actuator design, which provides easy cable access and secure cable retention. The actuator also provides a tactile click for confirmation that the connector is fully mated.



# 0.30mm (.012") Pitch SMT FPC Connector 0.62mm (.024") Height

Series **502761**

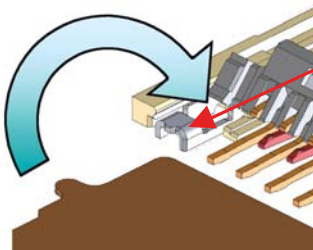
**Bottom Contact  
Easy-On™ Type**



### Features

### Benefits

- |  |  |
|--|--|
| <ul style="list-style-type: none"> <li>• Ultra low profile of 0.62mm (.024")</li> </ul>              | <ul style="list-style-type: none"> <li>• Space savings</li> </ul>  |
| <ul style="list-style-type: none"> <li>• FPC ear-tab locking feature</li> </ul>                      | <ul style="list-style-type: none"> <li>• Cable alignment, high retention force and easy actuation</li> </ul> |
| <ul style="list-style-type: none"> <li>• Low Insertion Force (LIF) FPC cable-hold feature</li> </ul> | <ul style="list-style-type: none"> <li>• Additional cable alignment and retention</li> </ul>                 |
| <ul style="list-style-type: none"> <li>• Metal reinforced actuator</li> </ul>                        | <ul style="list-style-type: none"> <li>• Actuator protection and helps enable ultra low profile</li> </ul>   |
| <ul style="list-style-type: none"> <li>• Gold-plated terminal contact area</li> </ul>                | <ul style="list-style-type: none"> <li>• Superior reliability and protects against tin-whiskering</li> </ul> |
| <ul style="list-style-type: none"> <li>• Nickel barrier plating</li> </ul>                           | <ul style="list-style-type: none"> <li>• Protects against solder flux intrusion</li> </ul>                   |

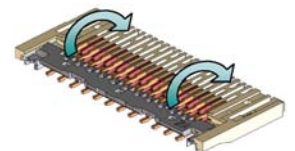


FPC tab fits into notch in connector to provide cable alignment, high retention force and easy actuation

Fitting nail's reversed "U" position helps serve as a cable guide



Actuator has metal stiffener to provide additional robustness and help enable the low profile



**Note: Special Care When Opening Actuator:** Because of the thin profile of the actuator, special care needs to be taken when opening it. Operators need to lift with the same force, gently and equally, on the right and left side of the actuator at the same time. Putting pressure on just one point could damage or deform the actuator.

## MARKETS AND APPLICATIONS

- |   |   |
|---|---|
| <ul style="list-style-type: none"> <li>• Mobile phones</li> <li>• Portable audio players</li> <li>• Digital still cameras</li> <li>• Digital video cameras</li> <li>• Portable games</li> </ul> | <ul style="list-style-type: none"> <li>• Car navigation</li> <li>• Personal navigators (PND)</li> <li>• Any application requiring ultra low profile features</li> </ul> |
|---|---|





**0.30mm (.012") Pitch  
SMT FPC Connector  
0.62mm (.024") Height**

**Series 502761**

**Bottom Contact  
Easy-On™ Type**

| Order No.   | Pitch          | Circuits | Height         | Width          |
|-------------|----------------|----------|----------------|----------------|
| 502761-3300 | 0.30mm (.012") | 33       | 0.62mm (.024") | 4.37mm (.172") |
| 502761-4900 |                | 49       |                |                |

**molex**<sup>®</sup>  
one company > a world of innovation

**Americas Headquarters**  
2222 Wellington Ct,  
Lisle, Illinois 60532 USA  
Tel: 1-800-78MOLEX  
amerinfo@molex.com

**Asia Pacific North Headquarters**  
Yamato, Kanagawa, Japan  
Tel: 81-46-265-2325  
apninfo@molex.com

**Asia Pacific South Headquarters**  
Jurong, Singapore  
Tel: 65-6-268-6868  
apsinfo@molex.com

**European Headquarters**  
Munich, Germany  
Tel: 49-89-413092-0  
euroinfo@molex.com

**Corporate Headquarters**  
2222 Wellington Ct,  
Lisle, Illinois 60532 USA  
Tel: 630-969-4550

Visit our website at [www.molex.com](http://www.molex.com)